

FIBRACOUSTIC

... CREATIVITY FROM NATURE

AMF FIBRACOUSTIC is ceiling tile made from wood fibres bound together with cement. As well as a stylish appearance FIBRACOUSTIC also has excellent physical properties of impact resistance.



AMF Project Hilton Hotel, Bulgaria





SURFACE DESIGN

FIBRACOUSTIC

AVAILABLE AS

WOOD

Ceiling tile made from long wood fibres bound together with grey or white cement. (woodwool lightweight tile as per DIN 1101)

SUSPENSION SYSTEMS



CONCEALED GRID SYSTEM
Non-demountable panels GN
Demountable panels AW / GN



EXPOSED GRID SYSTEM
For 24 or 35 mm wide sections,
Demountable ceiling



IMPACT RESISTANT CONSTRUCTION
Concealed Grid

TECHNICAL PERFORMANCE



Class 1 Surface Spread of Flame to BS476: Part 7:
Class 0 as defined by Building Regulations, 1987.
Class B1 as per DIN 4102 part 4.



Sound absorption as per BS EN 20354: 1993



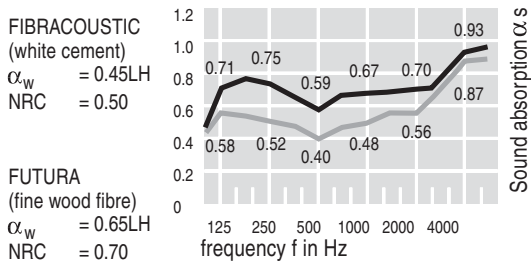
Thermal conductivity
 $\lambda = 0.09 \text{ W / mK}$



Sound attenuation as per BS EN 20140-9: 1994
 $D_{n,c,w} = 41 \text{ dB}$ (25 mm white cement)



Up to 70%



SPECIAL PROPERTIES



Humidity resistant panels up to 95% RH



Impact-resistance construction for sports halls, schools and kindergartens (System B)

DIMENSIONS, PANEL THICKNESS

Standard Sizes: 600 x 600 mm / 625 x 625 mm / 1250 x 625 mm
1200 x 600 mm / 2000 x 600 mm / 2500 x 600 mm

Thickness / Weight: 25 mm (c. 12 – 14 kg / m²) / 35 mm (c. 16 – 18 kg / m²) / 50 mm (c. 24 – 28 kg / m²)

Further sizes and thicknesses on request.



AMF-Mineralplatten GmbH Betriebs KG, is certified in accordance with Quality Assurance Standard to ISO 9001 and ISO 14001

GUIDELINES

The natural structure of wood may give colour variations.

All specifications are subject to change without notice.

Ceiling installation must be as described in the relevant test reports and assessments.

Further information

All information provided is current technical data. Where AMF products are used for fire protection and sound insulation applications, the appropriate official test reports must be followed. AMF will not accept liability for installations where products other than those supplied by AMF are used. All technical data can be changed without notice.

Site conditions

Installation should not start until the building is weather tight with windows glazed, all wet trades completed and dried out, and the building suitably heated. AMF Ceiling Panels are intended for interior use within a temperature range of 15–30 degrees C. Guarantees as per our conditions of sale.

Service

Full technical information, assessments, test reports, samples etc. are available on request.

FIBRACOUSTIC lightweight wooden ceiling tiles offer new possibilities for ceiling design. This natural material, made from wood fibres bound together with grey or white cement, is available in a wide range of RAL colours. FIBRACOUSTIC Mirage tiles give a changed appearance when viewed from different angles. The excellent physical characteristics of FIBRACOUSTIC allow the tile to be used both internally and externally, with up to 95% moisture and humidity resistance in AMF concealed grid System A or AMF exposed grid System C. Applications include cinemas, car parks and public buildings, and all areas where an impact-resistant ceiling is required.



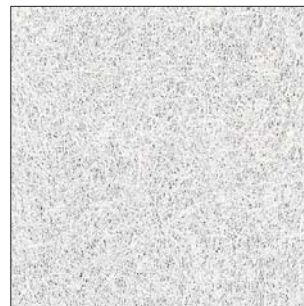
Due to the natural structure of the wood, colour variations may occur in white and grey cement panels.

Illustrated face patterns are examples.



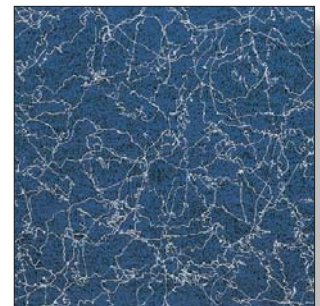
White cement

FIBRACOUSTIC



Grey cement - painted white

FIBRACOUSTIC



Cracked Glaze blue

FIBRACOUSTIC



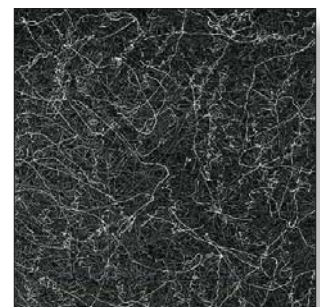
White cement - painted white

FIBRACOUSTIC



Grey cement - painted black

FIBRACOUSTIC



Cracked Glaze black

FIBRACOUSTIC



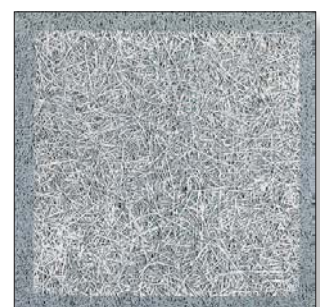
Grey cement

FIBRACOUSTIC



Mirage copper

FIBRACOUSTIC



Europe Type 1

FIBRACOUSTIC